



# LODESTAR®

## ELECTRIC CHAIN MOTOR

### 2-TON, SINGLE-REEVED

The CM® entertainment Lodestar® is now available as an economical 2-ton, single-reeved unit that's ideal for a variety of lifting applications. And, because it's a single-reeved unit, overall weight is decreased making it easier to transport and rig compared to a traditional double-reeved unit.

#### BENEFITS & FEATURES

##### LESS MAINTENANCE & EASIER INSPECTION

- Brake location allows for quick access and easy inspection.
- Lifetime grease-lubricated Gear Box means no oil change is required.
- Clutch located outside the Gear Box allows for easy access which eliminates the need for complete disassembly and reduces downtime.

##### IMPROVED SERVICEABILITY

Easy access to the Clutch, Motor, Electrical Control Panel and Brake Assembly.

##### LONGER SERVICE LIFE

- Heavy-duty DC brake is designed for a long service life.
- Lifetime grease-lubricated Gear Box and helical gearing ensures better wear and smooth operation. Heavy-duty rated motors.

##### IMPROVED LOAD SAFETY

Clutch is located outside the load path preventing slipping of the load in an overload condition when the brake is not powered.

##### IMPROVED CHAIN LIFE

5-Pocket Lift Wheel provides better chain and lift wheel engagement for smoother lifting and reduced vibration equating to less wear and a longer chain life. Zinc plating protects chain from environmental conditions.

##### EASY ACCESS CONTROL PANEL

Finger-safe wiring and plug-and-play connectors on the Control Panel allow for quick voltage change, easy access to terminal strips and simple fuse installation.

##### ZINC PLATED LOAD CHAIN

Designed and manufactured in the USA by Columbus McKinnon. 10 millimeter, zinc plated Star Grade load chain protects against corrosion.

##### ADJUSTABLE LIMIT SWITCH

Easy-to-adjust screw limit switch automatically stops the hook at any predetermined point when either lifting or lowering, preventing overtravel.

##### OVERLOAD PROTECTOR

Helps prevent lifting of dangerous overloads.

##### METRIC RATED

##### LIFETIME WARRANTY

The industry's best warranty against manufacturing and material defects.

##### STANDARD ROTATABLE LIMIT SWITCH

Designed for quick reset of limit position.

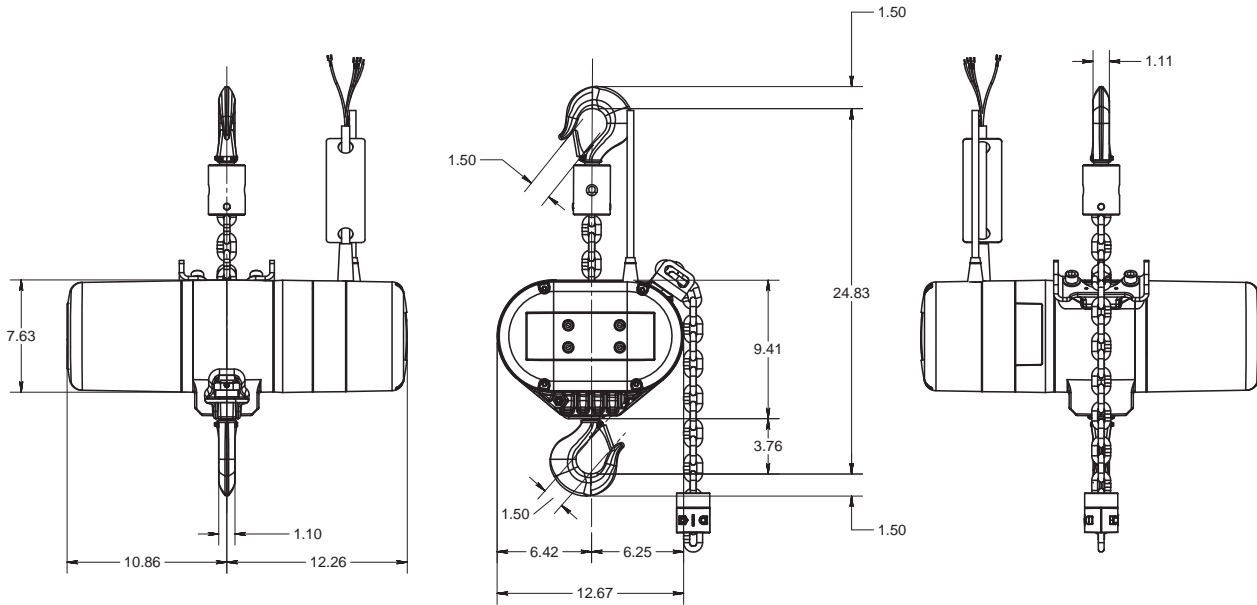
##### SWIVEL OR RIGID HOOK SUSPENSION AVAILABLE





# LODESTAR<sup>®</sup>

## ELECTRIC CHAIN MOTOR



Dimensions (in inches) are RRS model CM-ET Lodestar 2 Ton Single Reeved with Swivel Latch Type Hook Suspension.

### OPTIONAL FEATURES

#### **DIRECT CONTROL**

Direct Control allows multiple motor units to be operated with a single control.

#### **D8+**

Meets all Standard VPLT SR 2.0/SQP2 requirements.

#### **BGV-C1**

Meets all standard C1 and DIN 56950 requirements.

#### **VARIABLE SPEED DRIVE (VFD)**

#### **DOUBLE DC BRAKE**

Two independent acting DC Brakes for redundant braking. Field installation kit available.

#### **PRIMARY & SECONDARY TRANSFORMER FUSING**



USA: 800.888.0985 • 716.689.5400 • Fax: 716.689.5644  
CDN: 877.264.6478 • Fax: 877.264.6477  
[www.cm-et.com](http://www.cm-et.com)